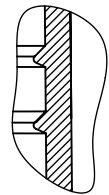
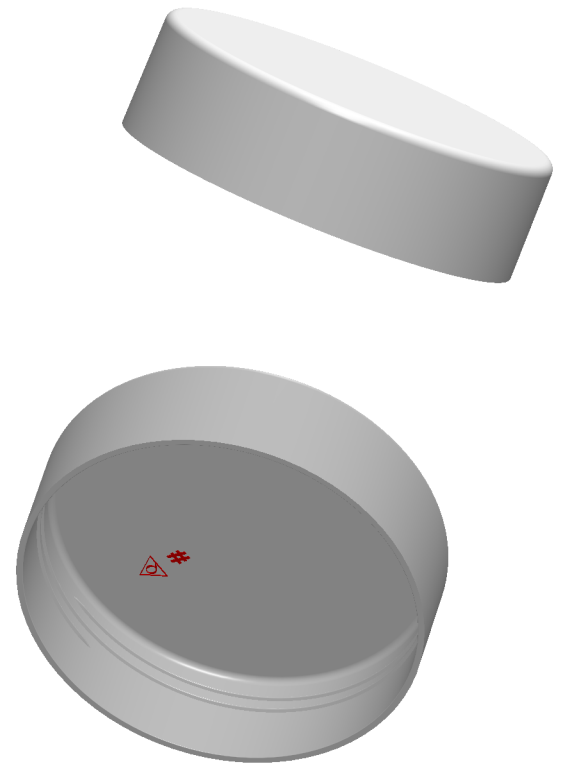
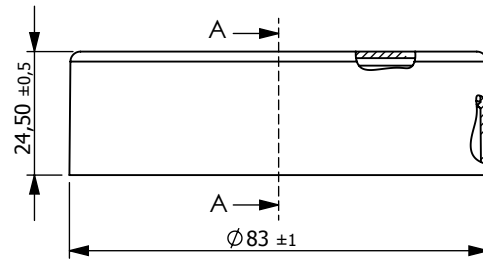
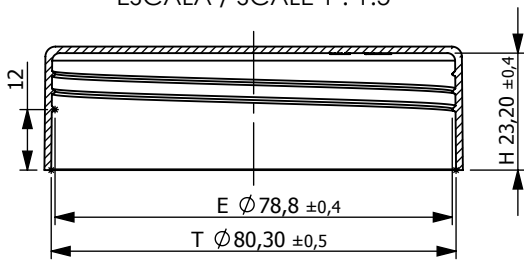


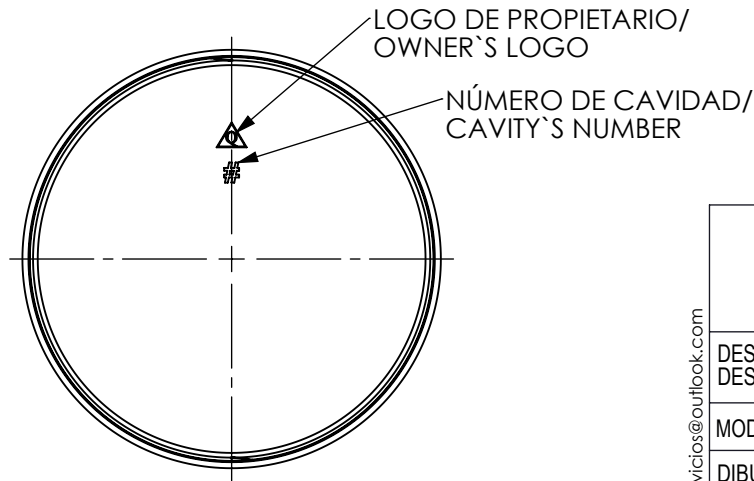
SECCIÓN / SECTION A-A  
ESCALA / SCALE 1 : 1.5



ROSCA 80 mm / 80 mm SPECIAL THREAD FINISH

NOTAS / NOTES:

1. PASO DE ROSCA 7,0 mm CADA ENTRADA / THREAD PITCH 7,0 mm EACH ENTRY.
2. 3,5 mm ENTRE FILETES / 3,5 mm BETWEEN THREAD'S SHAPES.
3. 1 VUELTA EFECTIVA / 1 TURN OF FULL THREAD.
4. ROSCA 2 ENTRADAS A 180° / 2 THREAD ENTRIES 180° APART.
5. ROSCA TRAPEZOIDAL INVERTIDA TIPO "M" / INVERTED "M" STYLE THREAD PROFILE.



PARA CONSTRUIR EL MOLDE, CONSULTE AL PROPIETARIO ACERCA DE LA EXISTENCIA DEL ARCHIVO 3D CAD. TO MANUFACTURE THE MOLD, ASK THE PROPRIETARY ABOUT THE EXISTING 3D CAD FILE.

A MENOS QUE SE ESPECIFIQUE LO CONTRARIO, TODAS LAS DIMENSIONES ESTÁN INDICADAS EN mm. UNLESS OTHERWISE SPECIFIED, ALL DIMENSIONS ARE GIVEN IN mm.



digiworks-servicios@outlook.com

DESCRIPCIÓN / DESCRIPTION:		TAPA CILÍNDRICA 80 mm. REF. 86		
MODELADO/MODELED BY:	DIGIWORKS, C.A.	15/02/2018	VISTAS/VIEW POINTS:	
DIBUJO/DRAWN BY:	C. VISBAL	17/02/2018	CAPACIDAD AL DERRAME / OVERFLOW CAPACITY	N/A
APROBADO/APPROVED BY:		JULIO SORTINO	HOJA/SHEET:	1 / 1
			REV.:	N/A
NÚMERO DE PLANO / DRAWING NUMBER:	000086150218	FORMATO / PAPER SIZE:	MATERIAL:	PP
ESCALA / SCALE:	1:1.5	CARTA/LETTER (A4)	PESO/WEIGHT:	13,7 ± 1 g

Identificación de producto en DigiWorks: AR00340